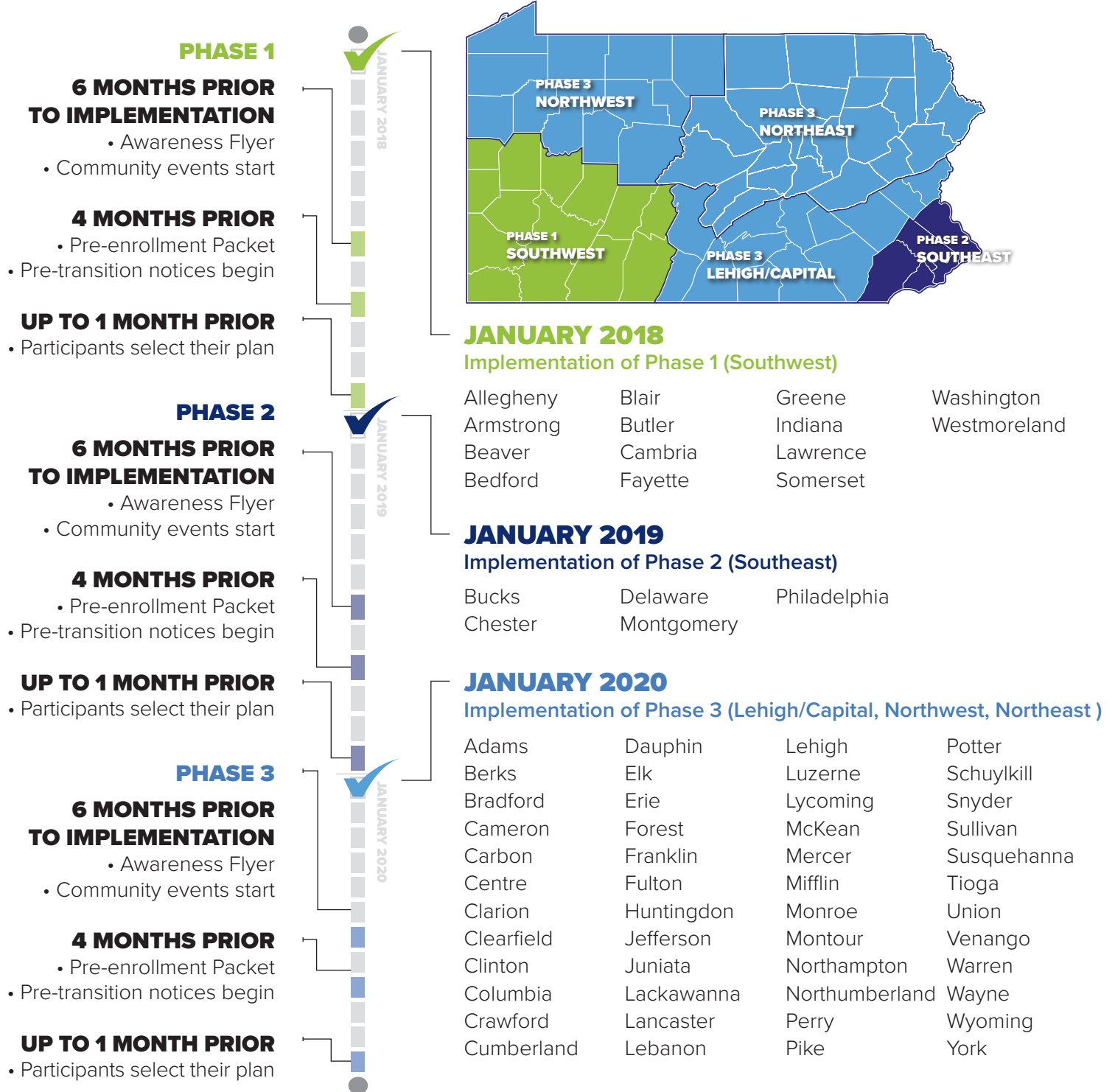


TIMELINE FOR IMPLEMENTATION

COMMUNITY HEALTHCHOICES (CHC) WILL BE PHASED IN ACROSS THE STATE OVER THE NEXT THREE YEARS USING THE FIVE GEOGRAPHIC HEALTHCHOICES ZONES.



DATE: FEBRUARY 2019